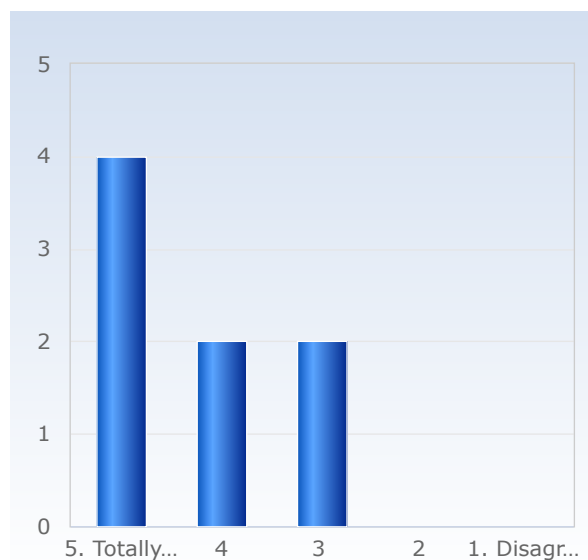


# Kursvärdering MM7042 Commutative algebra and algebraic geometry HT22

Respondents: 48  
Answer Count: 8  
Answer Frequency: 16,67 %

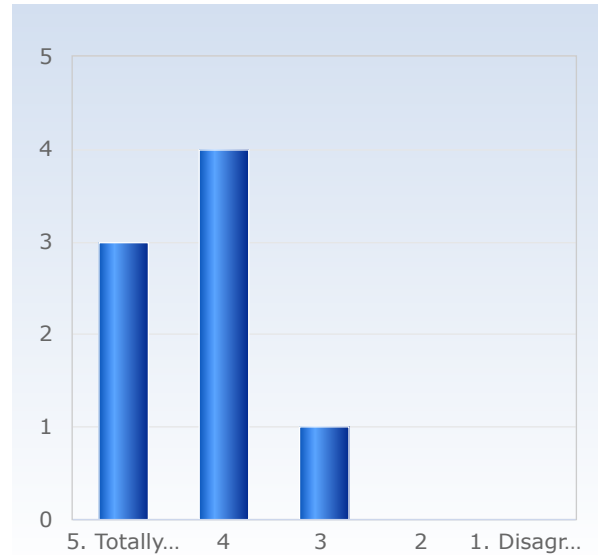
## 1. Overall, I am satisfied with the course.

Overall, I am satisfied with the course.	Number of responses
1. Disagree	0 (0,0%)
2	0 (0,0%)
3	2 (25,0%)
4	2 (25,0%)
5. Totally agree	4 (50,0%)
Total	8 (100,0%)



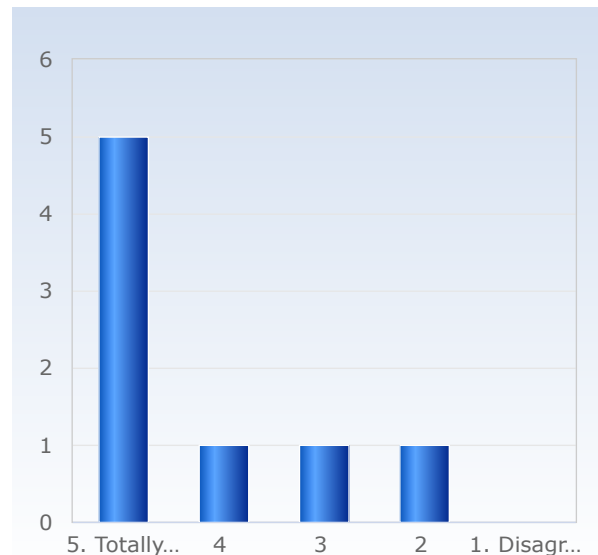
## 2. The content of the course was relevant to me for achieving the intended learning outcomes.

<b>The content of the course was relevant to me for achieving the intended learning outcomes.</b>	<b>Number of responses</b>
1. Disagree	0 (0,0%)
2	0 (0,0%)
3	1 (12,5%)
4	4 (50,0%)
5. Totally agree	3 (37,5%)
Total	8 (100,0%)



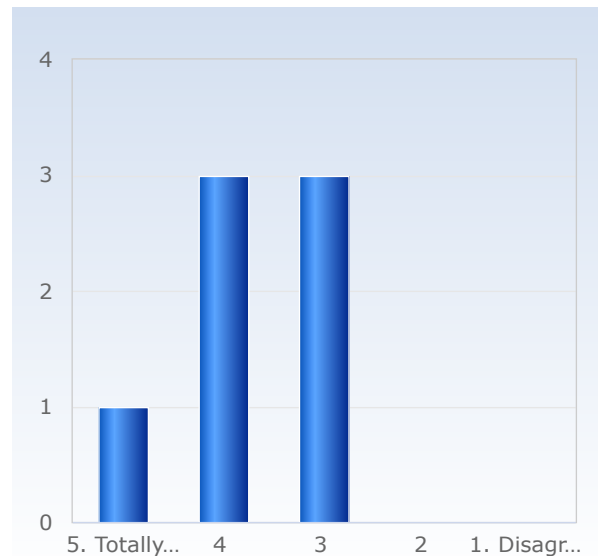
## 3. The teaching gave me good conditions to achieve the intended learning outcomes.

<b>The teaching gave me good conditions to achieve the intended learning outcomes.</b>	<b>Number of responses</b>
1. Disagree	0 (0,0%)
2	1 (12,5%)
3	1 (12,5%)
4	1 (12,5%)
5. Totally agree	5 (62,5%)
Total	8 (100,0%)



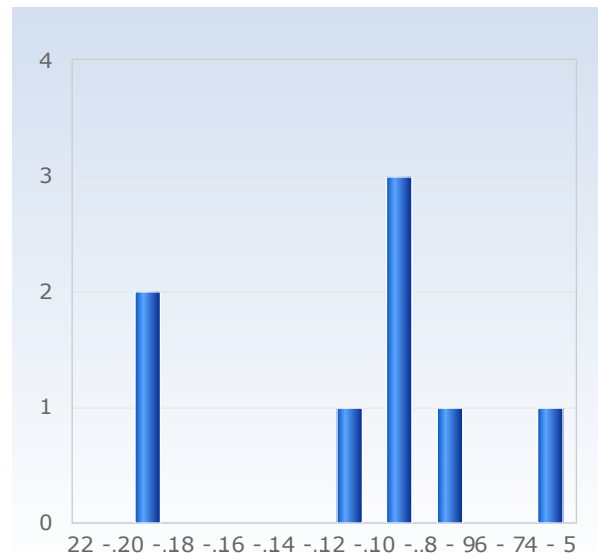
## 4. The examination/assessment tested how well I achieved the intended learning outcomes.

The examination /assessment tested how well I achieved the intended learning outcomes.	Number of responses
1. Disagree	0 (0,0%)
2	0 (0,0%)
3	3 (42,9%)
4	3 (42,9%)
5. Totally agree	1 (14,3%)
Total	7 (100,0%)



## 5. On average, I have spent approximately the following number of hours per week on the course, total time, including self-study.

On average, I have spent approximately the following number of hours per week on the course, total time, including self-study.	Number of responses
4 - 5	1 (12,5%)
6 - 7	0 (0,0%)
8 - 9	1 (12,5%)
10 - 11	3 (37,5%)
12 - 13	1 (12,5%)
14 - 15	0 (0,0%)
16 - 17	0 (0,0%)
18 - 19	0 (0,0%)
20 - 21	2 (25,0%)
22 - 23	0 (0,0%)
Total	8 (100,0%)



## 8. I think it worked well to write the exam at the centrally-administered examination halls.

I think it worked well to write the exam at the centrally-administered examination halls.	Number of responses
1. Disagree.	1 (12,5%)
2.	0 (0,0%)
3.	1 (12,5%)
4.	1 (12,5%)
5. Totally agree.	3 (37,5%)
Don't know	2 (25,0%)
Total	8 (100,0%)

