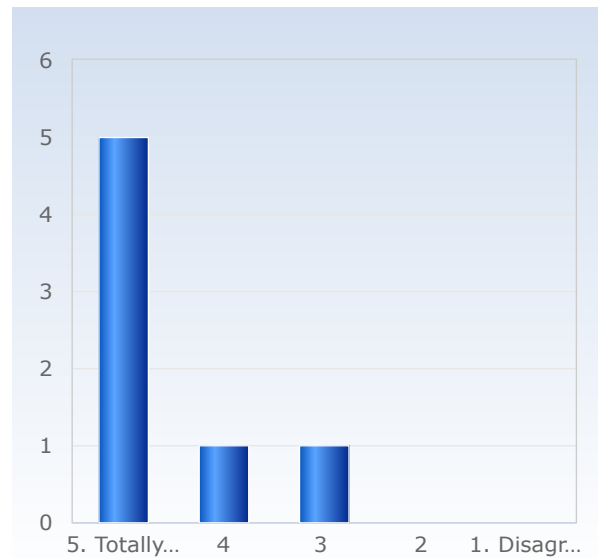


# Course Evaluation MT5003 Theory of Statistical Inference HT22

Respondents: 40  
Answer Count: 7  
Answer Frequency: 17,50 %

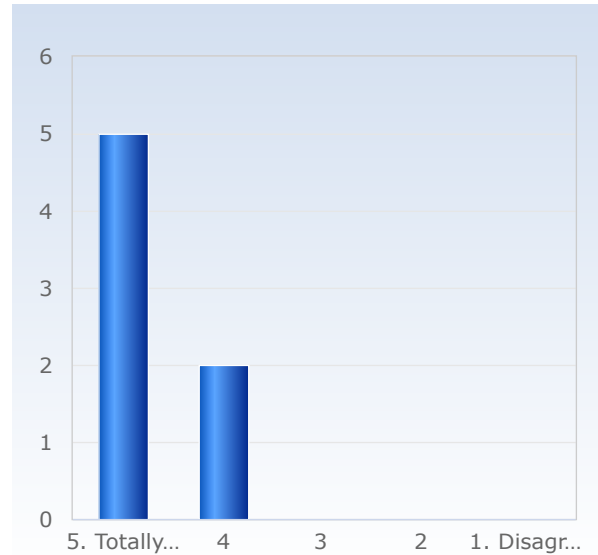
## 1. Overall, I am satisfied with the course.

Overall, I am satisfied with the course.	Number of responses
1. Disagree	0 (0,0%)
2	0 (0,0%)
3	1 (14,3%)
4	1 (14,3%)
5. Totally agree	5 (71,4%)
Total	7 (100,0%)



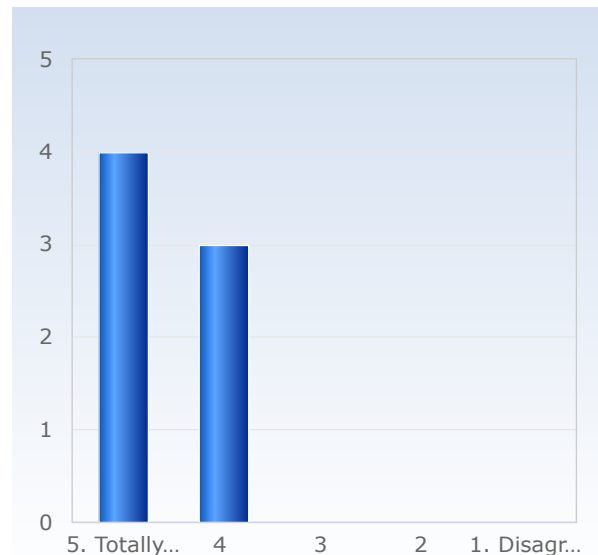
## 2. The content of the course was relevant to me for achieving the intended learning outcomes.

<b>The content of the course was relevant to me for achieving the intended learning outcomes.</b>	<b>Number of responses</b>
1. Disagree	0 (0,0%)
2	0 (0,0%)
3	0 (0,0%)
4	2 (28,6%)
5. Totally agree	5 (71,4%)
Total	7 (100,0%)



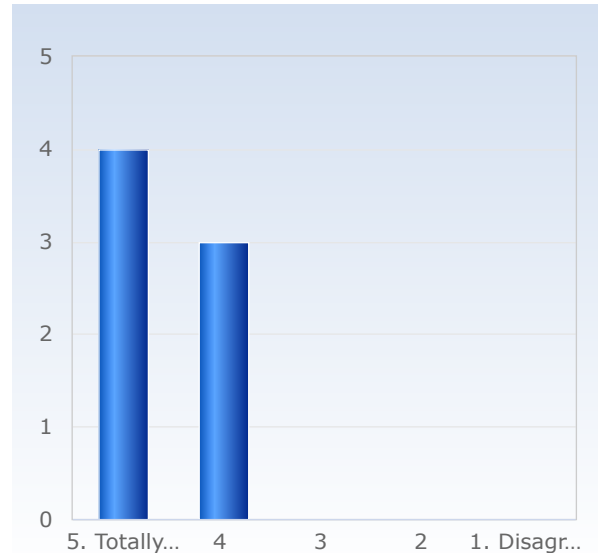
## 3. The teaching gave me good conditions to achieve the intended learning outcomes.

<b>The teaching gave me good conditions to achieve the intended learning outcomes.</b>	<b>Number of responses</b>
1. Disagree	0 (0,0%)
2	0 (0,0%)
3	0 (0,0%)
4	3 (42,9%)
5. Totally agree	4 (57,1%)
Total	7 (100,0%)



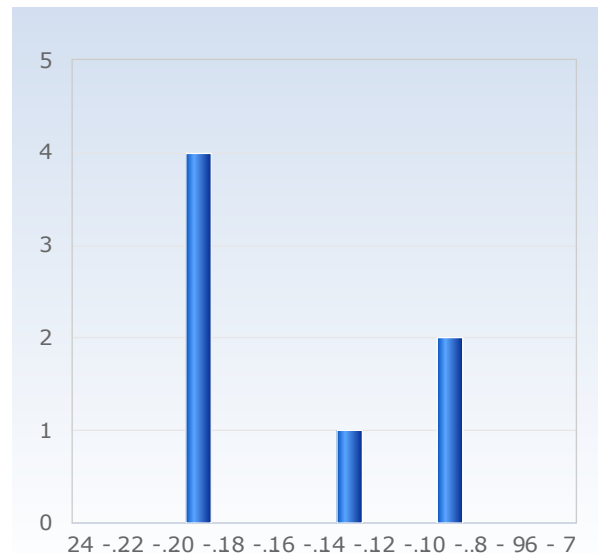
## 4. The examination/assessment tested how well I achieved the intended learning outcomes.

The examination /assessment tested how well I achieved the intended learning outcomes.	Number of responses
1. Disagree	0 (0,0%)
2	0 (0,0%)
3	0 (0,0%)
4	3 (42,9%)
5. Totally agree	4 (57,1%)
Total	7 (100,0%)



## 5. On average, I have spent approximately the following number of hours per week on the course, total time, including self-study.

On average, I have spent approximately the following number of hours per week on the course, total time, including self-study.	Number of responses
6 - 7	0 (0,0%)
8 - 9	0 (0,0%)
10 - 11	2 (28,6%)
12 - 13	0 (0,0%)
14 - 15	1 (14,3%)
16 - 17	0 (0,0%)
18 - 19	0 (0,0%)
20 - 21	4 (57,1%)
22 - 23	0 (0,0%)
24 - 25	0 (0,0%)
Total	7 (100,0%)



# 8. I think it worked well to write the exam at the centrally-administered examination halls.

I think it worked well to write the exam at the centrally-administered examination halls.	Number of responses
1. Disagree	0 (0,0%)
2.	0 (0,0%)
3.	0 (0,0%)
4.	0 (0,0%)
5. Totally agree	6 (85,7%)
Don't know	1 (14,3%)
Total	7 (100,0%)

